



ALL INFORMATION ABOUT YOUR MACHINES ON A DASHBOARD

from location to history and from manuals
to inspections

HOEFLINK[®]



WHY HOEFLINK?

- › Remote assistance
- › Outrigger pressure calculator
- › All information in one place
- › Live machine location
- › Rental support

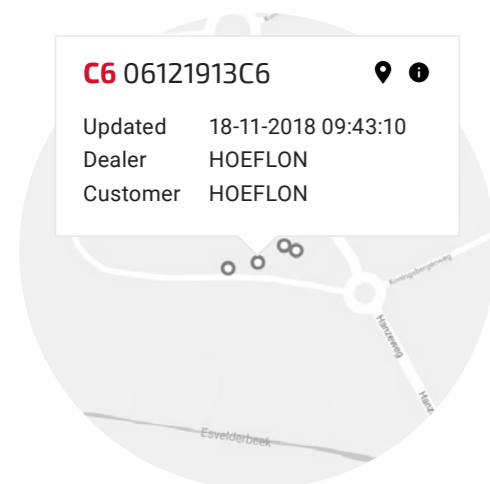


? HOW DOES IT WORK?

When you open HOEFLINK you will see a map showing the live location of your machines. Clicking one shows you all available information about that specific machine, such as the address where the machine is located, where it was last online, the time and the hours of operation.

From the operating hours you can see exactly what the machine was used for and how long it took. For example, how long the diesel engine and electric motor ran and how much time the machine spent driving and/or lifting.

- › Last update
- › Notifications
- › Timeline
- › Dealer/customer name
- › Inspections
- › Scheduled maintenance

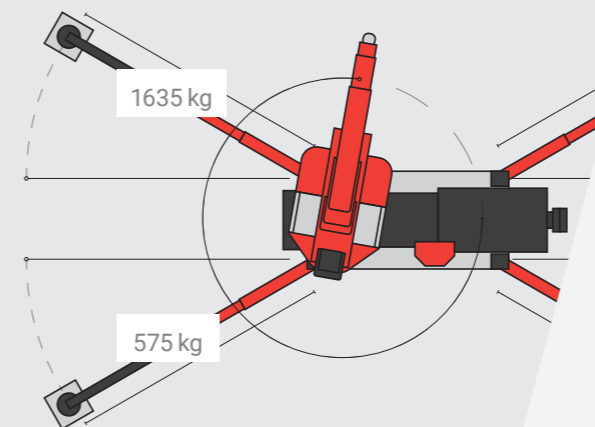


📍 GPS

Our HOEFLINK Portal has a built-in GPS, so you no longer need to purchase this separately. And if your machine is stolen, Hoeflon can easily put it out of operation.

📞 REMOTE ASSISTANCE

Our service department has insight into all our customers' machines, including yours. So if you call our service department with a problem, in most cases we don't even need to send a technician: thanks to HOEFLINK we can offer you the help you need remotely. This shortens a machine's downtime and keeps work interruptions to a minimum.



📊 OUTRIGGER PRESSURE CALCULATOR

Because we know what our customers care about, our portal offers you an advanced outrigger pressure calculator. This allows you to make accurate calculations for the lifting plan in advance. This way you work efficiently and save time and money!

📄 ALL INFORMATION IN ONE PLACE

In the portal you will find everything you need to perform your work optimally. If you use one or more attachments or if you are not entirely sure how a function works, you will find a clear, easy to follow explanation of how to use the machines in our instruction videos.

You can easily download the manuals. And if you still have questions, you can always contact our after-sales department.

- › Manuals
- › Load diagrams
- › Instruction videos



RENTAL SUPPORT


Hoeflon offers you something else unique: Rental Support. This allows you to collaborate with our extensive network. Dealers, private individuals and rental companies all have access to the HOEFLON cranes.


Briefly, this is how it works: Rental companies can make jobs available for machine owners. A message


is sent to the companies selected by the rental company, who can then choose whether they want to take on the job. This function also increases the efficiency of your business. Quite simply, Rental Support matches demand and availability.



LIFTING JOB

 **Location A**
400kg • 15m


 **Location B**
800kg • 20m


 **Location C**
700kg • 2m



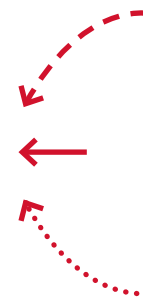
HOEFLON[®]

AVAILABLE CRANE

~ **Location B**
C10 

~ **Location C**
C1 

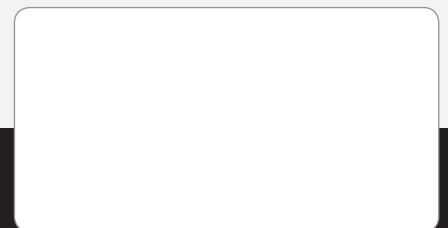
~ **Location A**
C6 



WHY HOEFLON?

Hoeflon mini-cranes are extremely versatile, making them perfect for lifting heavy materials in close quarters or difficult-to-reach areas at project sites. We are happy to offer advice concerning the best solution for your situation. Ask us about the possibilities!

Your Hoeflon[®] dealer ▶



HOEFLON[®]

Made in Holland

Hoeflon International B.V.

address Zwolleweg 2 3771 NR Barneveld, The Netherlands

tel. +31 (0)342 400288 email info@hoeflon.com

HOEFLON.COM