



> Model 50.13 EN

**The boundless
powerhouse
without limits.**



Specifications

Model 50.13



Productivity

Working height:	13,2 m	Continuous turntable rotation:	360°
Platform height:	11,2 m	Driving speed (transport mode):	0 - 2,8 km/h
Horizontal reach:	10 m	Driving speed (at height):	0 - 1,4 km/h
Travel height:	13,2 m	Gradeability:	45% = 25°
Platform capacity:	330 kg	Automatic bi-leveling:	15° / 15°
Platform rotation:	180°		
Vertical jib rotation:	180°		

Measurements

Machine

Transport dimensions (l x w x h):	4650 x 2200 x 2300 mm
Total mass without options:	4850 kg
Ground clearance:	350 mm

Platform

Standard - Dimensions (l x w x h):	1800 x 800 x 1100 mm
Option 1 - Dimensions (l x w x h):	1400 x 720 x 1100 mm
Optie 2 - Afmetingen (l x b x h):	2400 x 800 x 1100 mm
Entry width:	647 mm
Entry height:	920 mm
Step in height:	400 mm

Mechanical

43 liter fuel tank capacity (ATD)
 Fully proportional controls
 Loadsensing hydraulic pump
 2 speed track motors
 Automatic proportional RPM controller

Safety Features

Approval for EN280 / CE
 Tilt alarm
 LED flashing lights on rear
 Overhead safety crush prevention
 Integrated weight system in platform
 12V emergency lowering pump
 Dual top railing on basket
 Horn

Options

Available options on all models

Foldable load carriers on platform (70KG)
 Extra screw trays
 Holder for spray cans
 Adjustable work lights on platform
 4 x led work lights on main frame
 Led flood light under platform
 Non-marking rubber tracks (grey)
 Water level holder in platform
 Pail hanger in platform
 Solar panel installation basket incl. load carriers and clamps
 HY-Link portal communications, online diagnostics

Available options specific for ATD (Diesel)

Electric plug-in drive motor 230V / 380V
 6,5 kVA-230V AC generator for power in platform

Available options specific for ATE (Electric)

10 kWh extra batteries
 380V 3-phase charger for fast charging

Standard Hyrax colors

- Lashing and lifting points - Hyrax Red
 - Engine covers - signal white RAL 9003
 - All construction parts - black/grey RAL 7021
 - Work tray - Galvanized steel
- Custom color configurations possible

ATE

Fully lithium powered
 20kWh / 30kWh battery packs

ATD^{e+}

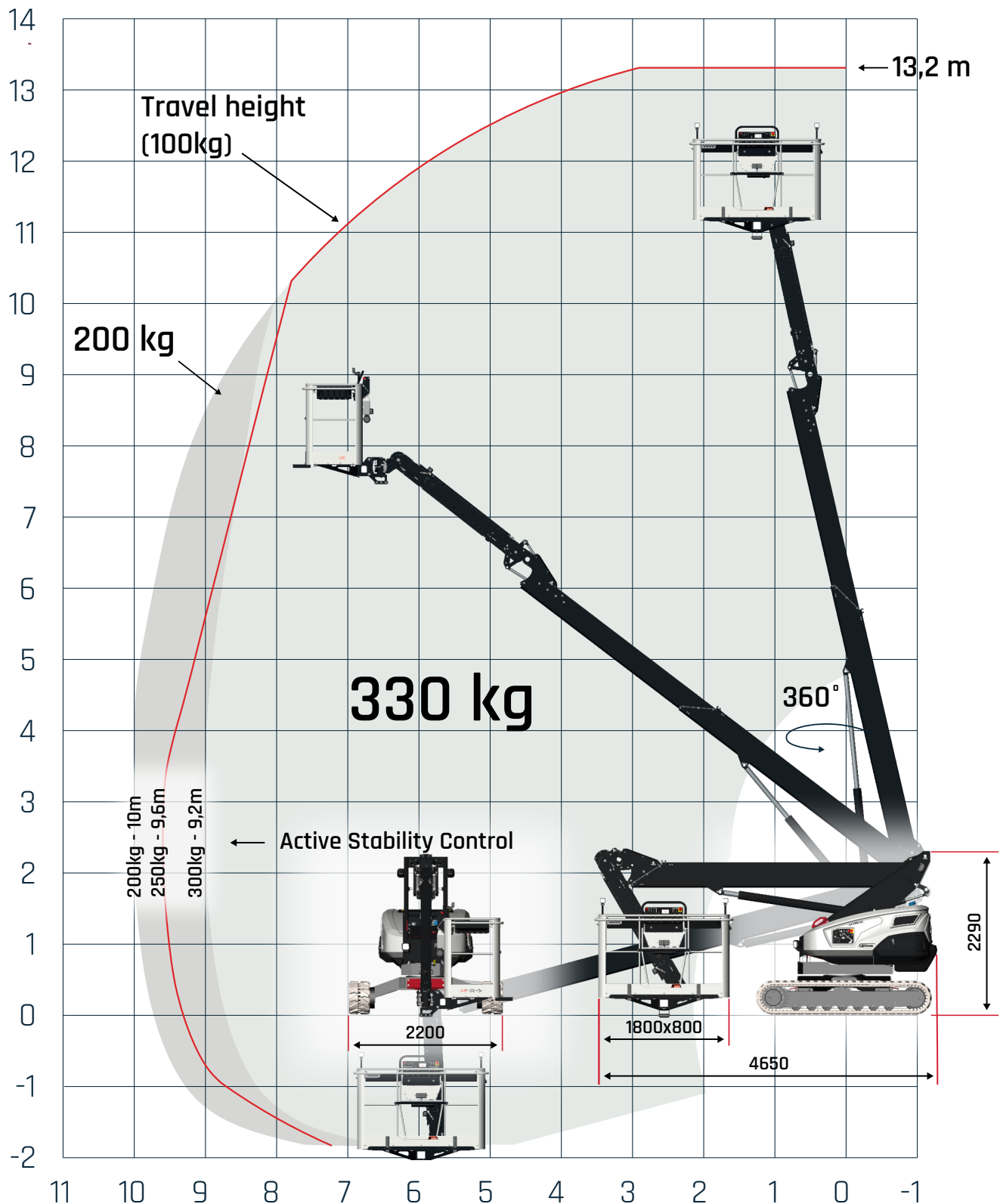
18,5kW 3 cil. Kubota diesel engine
 Electric plug-in drive motor 380V

ATD

18,5kW 3 cil. Kubota
 diesel engine

Diagrams

Working range



Hyrax Industries BV. has the policy to continuously improve their products.
Product specifications are subject to change without prior notice and can be changed without obligation.

Model 50.13

The rock

www.hyraXindustries.com



Heavy-duty design

With this 5 tons total weight you defy every construction site and nevertheless 4 machines fit on only 1 semi-trailer.



Working area

The fully automatic leveling system corrects slopes of up to 15° and remains drivable at full height.



Working load 330 kg

Built for teamwork: 3 people, in addition to their equipment.



Work at 13.2 meters

Work stable at 13.2 meters working height and 10 meters of outreach.